

Your Guide

Baywest's Architectural Enhancement Packages are community specific, due to individual architectural control requirements or features inspired by the Land Developer for each community. The team at Baywest will help you develop a compliant elevation for your new home, which involves choosing colour themes, and true-to-form design. This guide explains the symbols we use on our floorplans and what they represent.

Elevations shown may be subject to revisions or depict non-standard features. The builder reserves the right to make changes without notice or obligation.

Architectural ENHANCEMENTS

Howes
Baywest
EVERYTHING WE BUILD, WE BUILD AROUND YOU.

ARCHITECTURAL SERIES



TUDOR SERIES

- Simple, Rustic elements imitate medieval cottages or country homes. Stucco exteriors with contrasting smart board batten detailing and selective incorporation of stone
- Attached garages are tucked further into the home
- Dramatic steep pitched roof slopes and larger facia provide distinguished homes of character
- Estate elements such as a detailed front entry, exposed aggregate walk and driveways



FRENCH ESTATE SERIES

- Dominating French Country styling
- Stucco exteriors with contrasting stucco batten detailing and ample use of stone
- Garages are tucked into the home for less of a focal point.
- Sharp pitched roof slopes and larger facia provide distinguished homes of character
- Estate elements such as a detailed front entry, exposed aggregate walk and driveways



COTTAGE SERIES

- Stylized architectural enhancement to reflect cottage country living
- Traditional elements such as dormers, decorative gable ends, cupolas, window boxes, and knee braces are encouraged
- A combination of contrasting materials highlight the vinyl exteriors
- Use of cedar shakes, vinyl 'fish scales'
- Horizontal and vertical vinyl siding, smart board battens



RANCH SERIES

- Stylized exterior enhancement to reflect traditional themes with these country estate exteriors
- Stucco cladding with 'true to form' architectural details
- Extensive use of manufactured stone to enhance distinction
- This collection includes rear decks and decorator garage doors



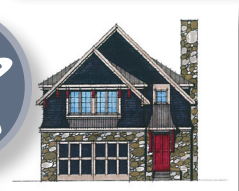
ARTISAN SERIES

- A modern interpretation of the "Craftsman" architectural form
- Asymmetrical shapes with predominantly darker siding
- Decorator series garage doors with windows
- Extensive contrasting trim including highly detailed gable ends
- Manufactured stone compliment the overall appearance
- Stainable fibreglass front door



ARTS & CRAFTS SERIES

- A fashionable residential style from early England and North America, dating back to medieval times
- Asymmetrical irregular form
- Steep roof slopes
- Windows are tall and narrow set in well defined ribbon bands
- Dominant cladding, stucco, with Hardie board trim
- Highlighted entry set in a sheltered portico



COASTAL SERIES

- Reminiscent styling of the 17 century New England sea-side architecture
- Features uneven moderately pitched roof line
- Large windows
- Wide Gable Eaves & Overhangs
- Double hung windows
- Hardie siding, shingles, stone & wood detailing
- Metal roof
- Roof Dormers



SHINGLE SERIES

- An American style used for sea-side vacation homes
- Flourished in the year's 1820-1880
- Upper floor is set within the roof slope
- Playful, free asymmetrical architectural expression
- Building is covered largely with shingles or a combination of materials to form a unified unembellished surface
- Shingle homes celebrate simple joys, honesty of form and purity of line



FRENCH COUNTRY SERIES

- Elements of the great French Chateaus from the 1800's time period.
- Restrained designs characterized by steeply pitched rooflines, gabled with cast-iron cresting
- Tall, elegantly decorated chimney towers
- Semi-circular arches
- Renaissance style entry's
- Stucco, hardie paneling & trim, masonry and wood detailing

READY-TO-GO

TAILORED

CUSTOM